

Indices of Industrial Production in the Chugoku Region

(Preliminary report for **December 2008**,
published on February 5, 2009)

Chugoku Bureau of Economy, Trade and Industry
Policy Planning and Research Division

Industrial Production: Production has drastically fallen.

Indices of Industrial Production for December (Preliminary Report)

Index, 2005 =100

	Seasonally-adjusted index		Original index	
		Percent change from previous month (%)		Percent change from previous year (%)
Production	(93.0)	(-9.4)	(91.3)	(-16.6)
	83.6	-10.1	86.8	-22.4
Shipments	(90.6)	(-10.2)	(88.5)	(-18.2)
	84.9	-6.3	89.2	-21.3
Inventory	(106.2)	(2.4)	(108.7)	(2.5)
	101.7	-4.2	101.9	-0.4
Inventory ratio	(124.8)	(5.9)	(128.0)	(23.1)
	125.0	0.2	125.6	24.2

Figures in parentheses indicate previous month's revised figures.

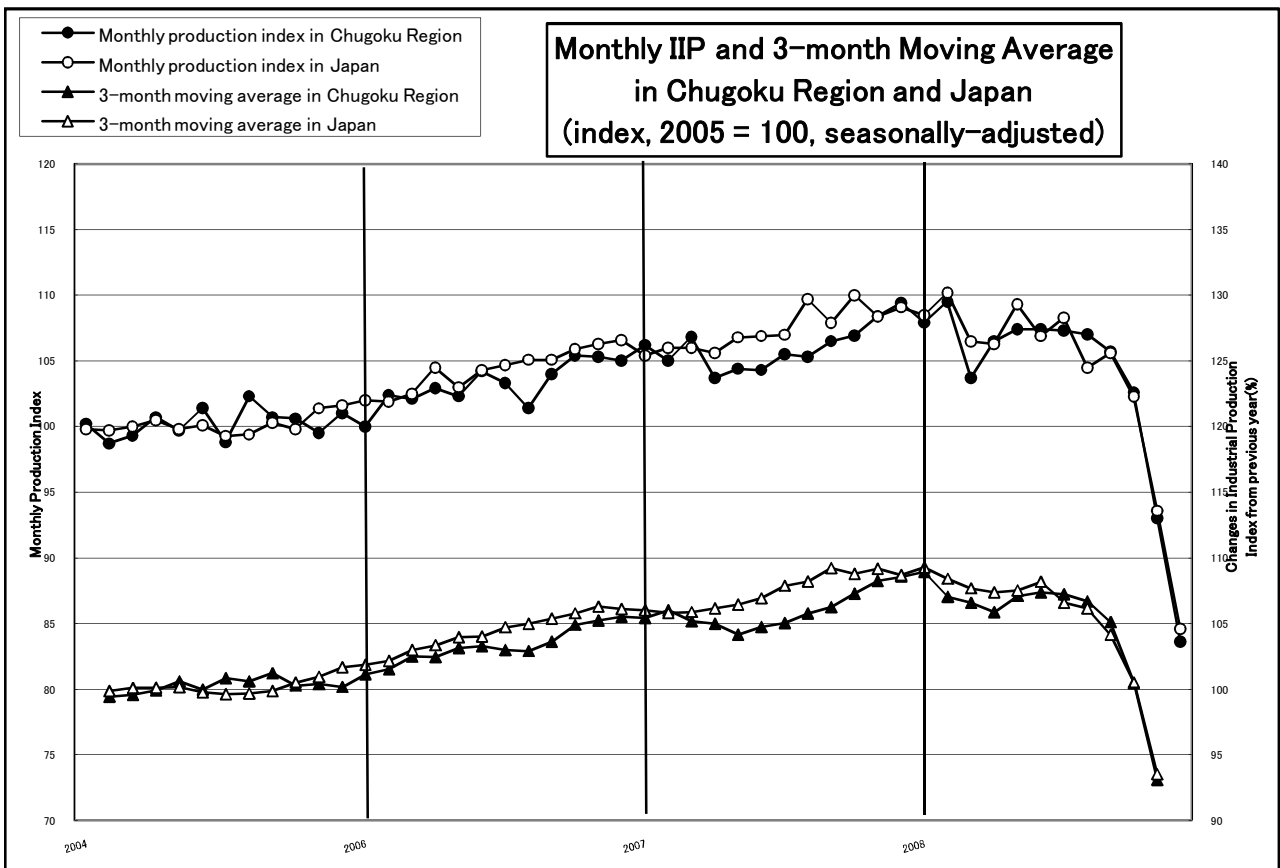
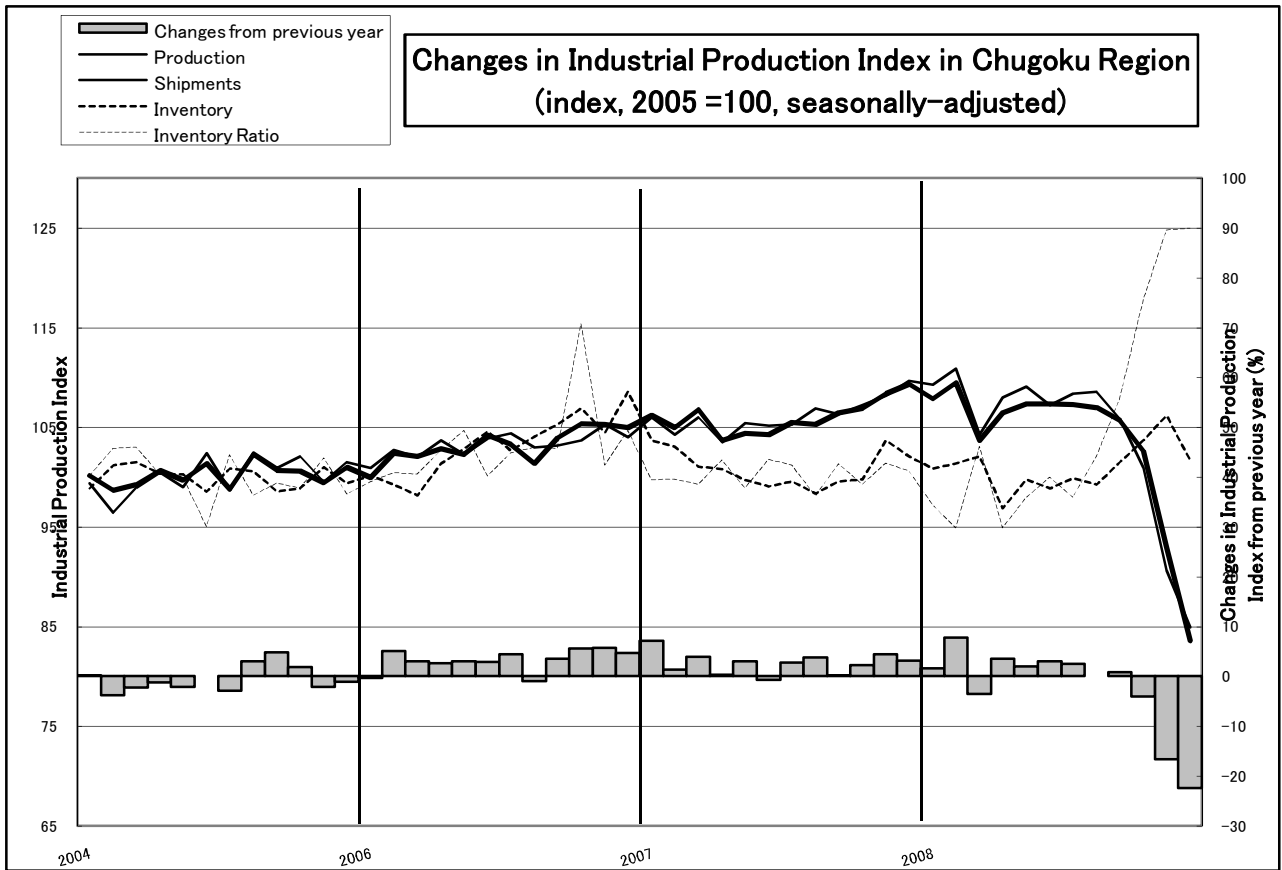


Table of Industrial Indices

〈Chugoku Region〉

(index, 2005 = 100)

		Production			Shipments			Inventory			Inventory Ratio		
		index	% Change from previous month	% Change from previous year	index	% Change from previous month	% Change from previous year	index	% Change from previous month	% Change from previous year	index	% Change from previous month	% Change from previous year
C.Y.	2006	103.3	-	3.3	103.3	-	3.3	108.5	-	9.6	103.1	-	3.1
	2007	106.0	-	2.6	106.2	-	2.8	102.3	-	▲ 5.7	100.3	-	▲ 2.7
	2008	103.5	-	▲ 2.4	103.9	-	▲ 2.2	101.9	-	▲ 0.4	105.3	-	5.0
Q4	2007	108.2	2.3	3.2	108.4	2.1	4.2	102.1	2.5	▲ 5.7	100.4	0.2	▲ 6.0
Q1	2008	107.0	▲ 1.1	1.7	108.2	▲ 0.2	2.5	102.1	0.0	0.9	98.4	▲ 2.0	▲ 1.6
Q2	2008	107.1	0.1	2.7	108.1	▲ 0.1	3.1	98.9	▲ 3.1	▲ 0.2	97.6	▲ 0.8	▲ 3.1
Q3	2008	106.7	▲ 0.4	1.1	107.6	▲ 0.5	1.7	101.5	2.6	1.9	102.6	5.1	2.4
Q4	2008	93.1	▲ 12.7	▲ 14.4	92.1	▲ 14.4	▲ 15.3	101.7	0.2	▲ 0.4	122.5	19.4	22.0
Sep	2007	106.5	1.1	0.2	106.3	▲ 0.6	1.1	99.6	1.2	▲ 5.5	101.3	3.3	▲ 1.6
Oct	2007	106.9	0.4	2.2	107.2	0.8	4.1	99.8	0.2	▲ 6.5	99.3	▲ 2.0	▲ 13.7
Nov	2007	108.4	1.4	4.4	108.2	0.9	3.5	103.7	3.9	▲ 0.7	101.4	2.1	0.3
Dec	2007	109.4	0.9	3.1	109.7	1.4	4.9	102.1	▲ 1.5	▲ 5.7	100.6	▲ 0.8	▲ 3.7
Jan	2007	107.9	▲ 1.4	1.7	109.3	▲ 0.4	3.1	100.9	▲ 1.2	▲ 2.7	97.2	▲ 3.4	▲ 2.5
Feb	2007	109.5	1.5	7.7	110.9	1.5	7.6	101.4	0.5	▲ 1.7	94.9	▲ 2.4	▲ 5.0
Mar	2007	103.7	▲ 5.3	▲ 3.6	104.3	▲ 6.0	▲ 2.4	102.1	0.7	0.9	103.1	8.6	3.8
Apr	2008	106.5	2.7	3.5	108.0	3.5	5.2	96.9	▲ 5.1	▲ 3.9	94.9	▲ 8.0	▲ 6.7
May	2008	107.4	0.8	2.0	109.1	1.0	2.6	99.8	3.0	0.1	97.9	3.2	▲ 1.0
Jun	2008	107.4	0.0	3.0	107.2	▲ 1.7	1.9	98.9	▲ 0.9	▲ 0.2	100.0	2.1	▲ 1.8
Jul	2008	107.3	▲ 0.1	2.5	108.4	1.1	3.9	99.9	1.0	0.3	98.0	▲ 2.0	▲ 3.2
Aug	2008	107.0	▲ 0.3	0.0	108.6	0.2	▲ 0.2	99.3	▲ 0.6	1.0	102.1	4.2	4.0
Sep	2008	105.7	▲ 1.2	0.8	105.9	▲ 2.5	1.3	101.5	2.2	1.9	107.8	5.6	6.4
Oct	2008	102.6	▲ 2.9	▲ 4.0	100.9	▲ 4.7	▲ 5.9	103.7	2.2	3.9	117.8	9.3	18.7
Nov	2008r	93.0	▲ 9.4	▲ 16.6	90.6	▲ 10.2	▲ 18.2	106.2	2.4	2.5	124.8	5.9	23.1
Dec	2008p	83.6	▲ 10.1	▲ 22.4	84.9	▲ 6.3	▲ 21.3	101.7	▲ 4.2	▲ 0.4	125.0	0.2	24.2

〈Nationwide〉

(index, 2005 = 100)

		Production			Shipments			Inventory			Inventory Ratio		
		index	% Change from previous month	% Change from previous year	index	% Change from previous month	% Change from previous year	index	% Change from previous month	% Change from previous year	index	% Change from previous month	% Change from previous year
C.Y.	2006	104.5	-	4.5	104.6	-	4.6	102.7	-	3.5	100.1	-	0.1
	2007	107.4	-	2.8	107.8	-	3.1	104.0	-	1.3	100.3	-	0.2
	2008	103.8	-	▲ 3.4	104.4	-	▲ 3.2	108.9	-	4.7	108.5	-	8.2
Q4	2007	109.2	0.9	3.3	109.9	1.4	4.4	105.5	1.2	1.3	100.5	▲ 0.4	0.1
Q1	2008	108.4	▲ 0.7	2.3	109.4	▲ 0.5	3.1	105.5	0.0	2.1	101.1	0.6	1.1
Q2	2008	107.5	▲ 0.8	1.0	108.4	▲ 0.9	1.2	105.9	0.4	2.7	102.5	1.4	2.3
Q3	2008	106.1	▲ 1.3	▲ 1.4	106.4	▲ 1.8	▲ 1.4	107.6	1.6	3.2	106.2	3.6	5.3
Q4	2008	93.5	▲ 11.9	▲ 14.7	93.9	▲ 11.7	▲ 15.0	110.5	2.7	4.7	124.9	17.6	24.3
Sep	2007	107.9	▲ 1.6	0.2	108.4	▲ 1.5	1.0	104.2	0.5	2.4	103.4	3.9	4.2
Oct	2007	110.0	1.9	5.3	110.1	1.6	6.3	104.9	0.7	1.8	99.1	▲ 4.2	▲ 1.9
Nov	2007	108.4	▲ 1.5	3.2	109.1	▲ 0.9	3.5	105.8	0.9	2.7	101.1	2.0	1.0
Dec	2007	109.1	0.6	1.5	110.6	1.4	3.3	105.5	▲ 0.3	1.3	101.3	0.2	1.3
Jan	2007	108.5	▲ 0.5	2.9	110.0	▲ 0.5	3.9	105.3	▲ 0.2	1.9	99.7	▲ 1.6	0.6
Feb	2007	110.2	1.6	5.1	111.3	1.2	5.8	105.4	0.1	2.3	98.3	▲ 1.4	▲ 1.1
Mar	2007	106.5	▲ 3.4	▲ 0.7	107.0	▲ 3.9	0.1	105.5	0.1	2.1	105.3	7.1	4.4
Apr	2008	106.3	▲ 0.2	1.9	108.0	0.9	2.8	104.2	▲ 1.2	1.0	101.2	▲ 3.9	0.4
May	2008	109.3	2.8	1.1	110.2	2.0	1.7	104.7	0.5	1.5	101.2	0.0	2.3
Jun	2008	106.9	▲ 2.2	0.0	106.9	▲ 3.0	▲ 0.6	105.9	1.1	2.7	105.0	3.8	4.0
Jul	2008	108.3	1.3	2.4	108.9	1.9	3.1	105.8	▲ 0.1	2.2	101.2	▲ 3.6	1.3
Aug	2008	104.5	▲ 3.5	▲ 6.9	104.9	▲ 3.7	▲ 6.8	105.5	▲ 0.3	1.7	109.0	7.7	9.5
Sep	2008	105.6	1.1	0.2	105.3	0.4	▲ 0.6	107.6	2.0	3.2	108.3	▲ 0.6	4.7
Oct	2008	102.3	▲ 3.1	▲ 7.1	102.1	▲ 3.0	▲ 7.3	109.5	1.8	4.4	112.5	3.9	13.6
Nov	2008r	93.6	▲ 8.5	▲ 16.6	93.5	▲ 8.4	▲ 17.0	110.4	0.8	4.3	127.0	12.9	25.6
Dec	2008p	84.6	▲ 9.6	▲ 20.6	86.0	▲ 8.0	▲ 20.5	110.5	0.1	4.7	135.3	6.5	33.5

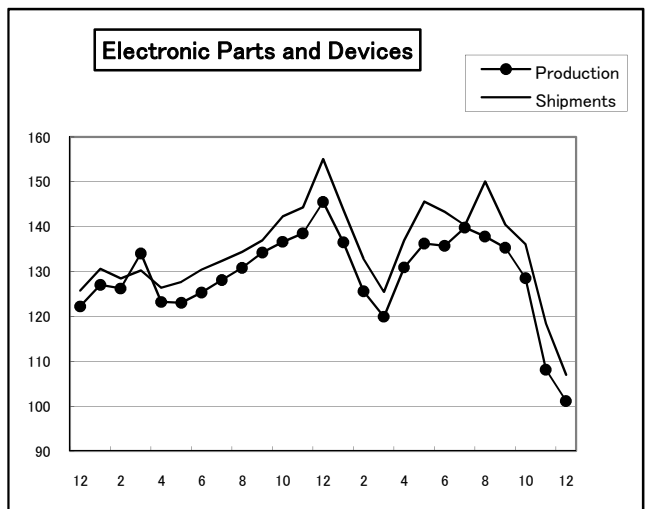
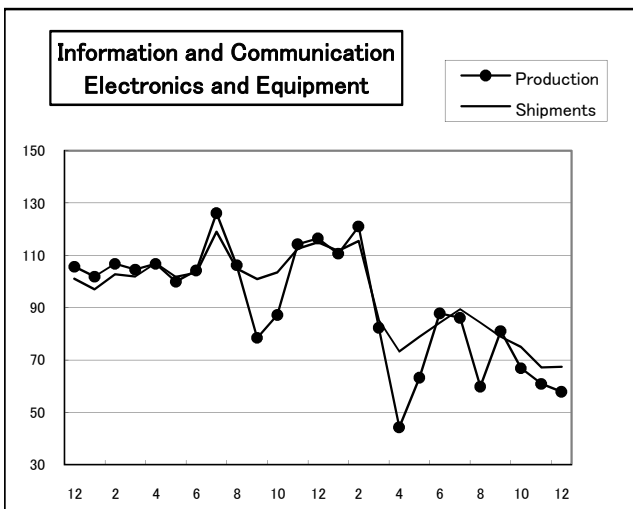
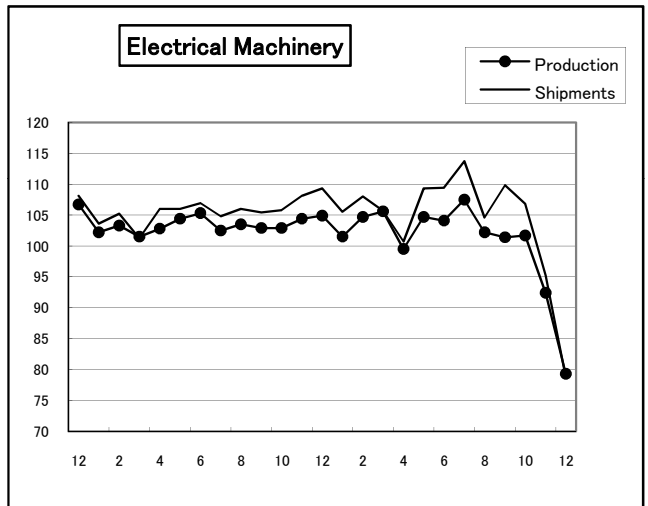
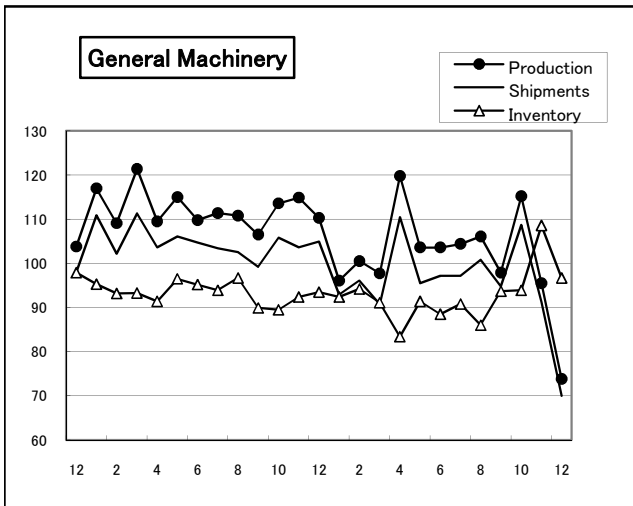
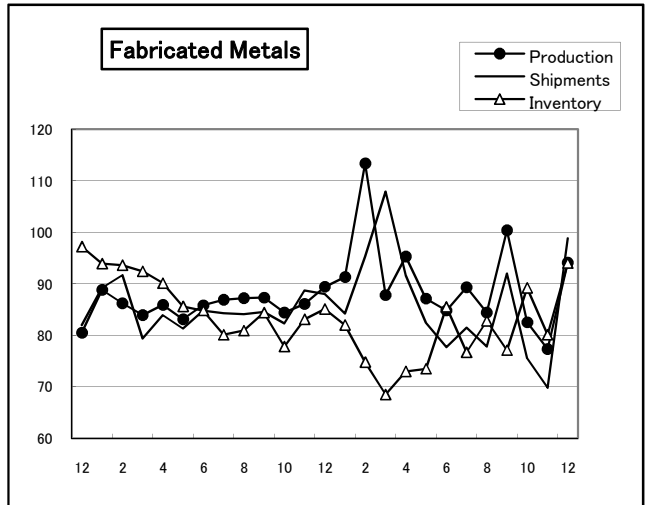
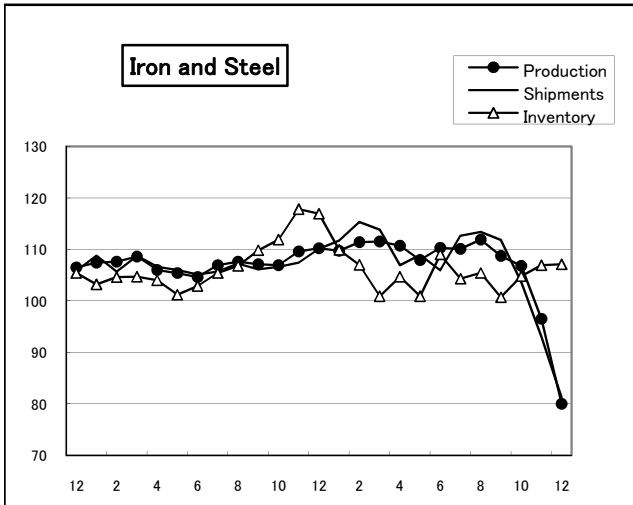
Note 1: Quarterly and monthly indices and changes from the previous month / quarter are seasonally adjusted.

Annual indices and changes from the previous year are original.

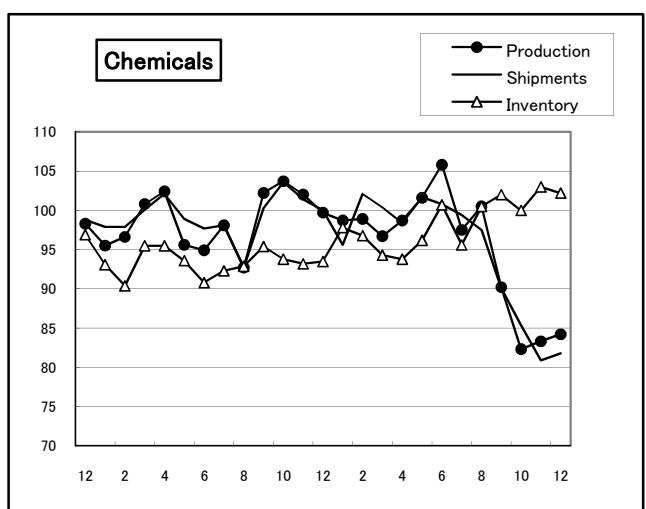
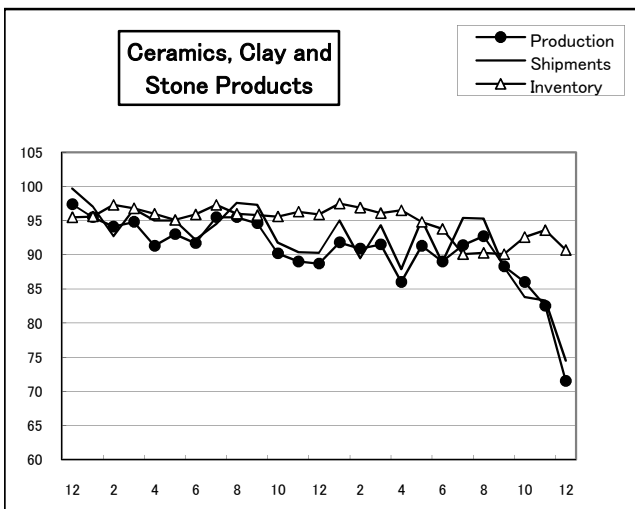
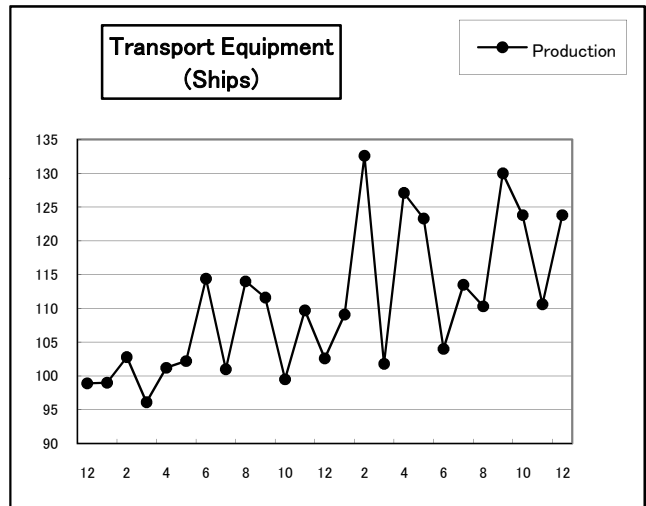
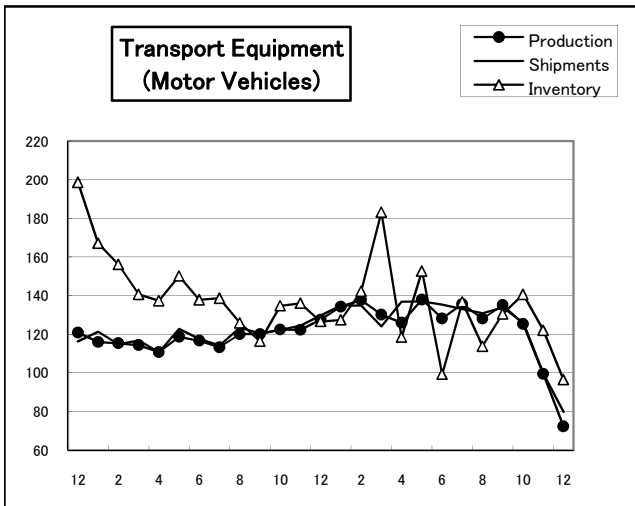
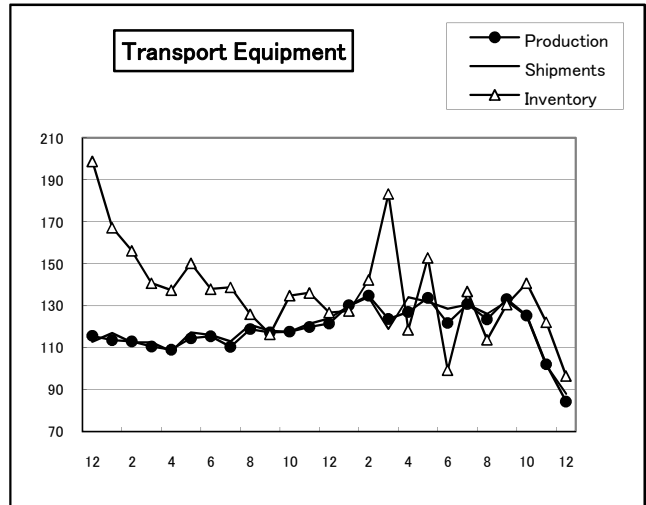
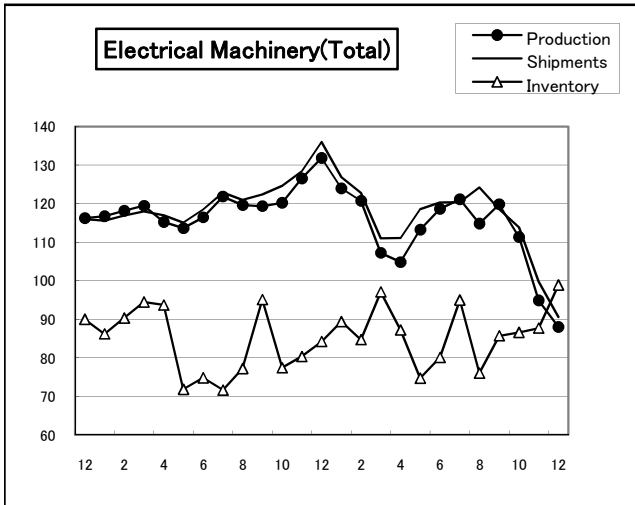
Note 2: The values of changes indicate growth rates.

Note 3: r = revised, p = preliminary

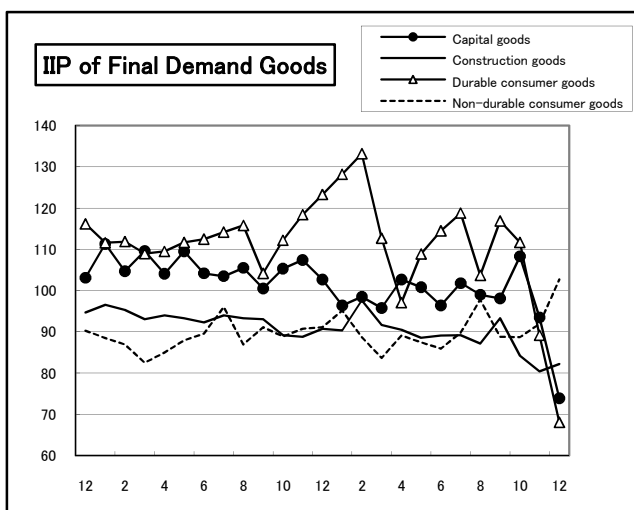
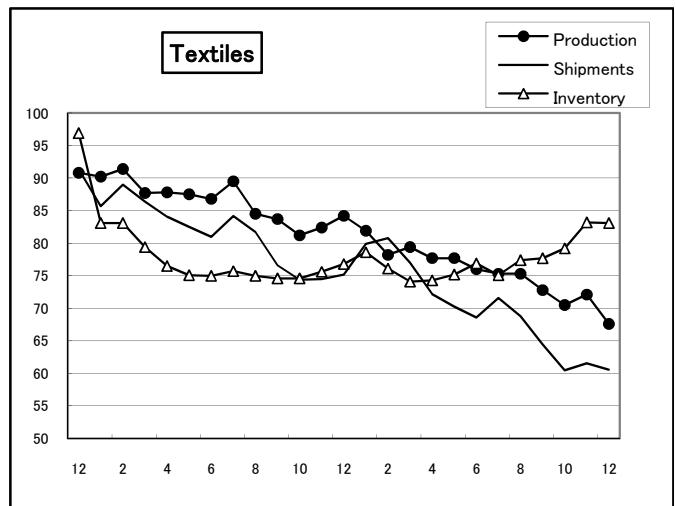
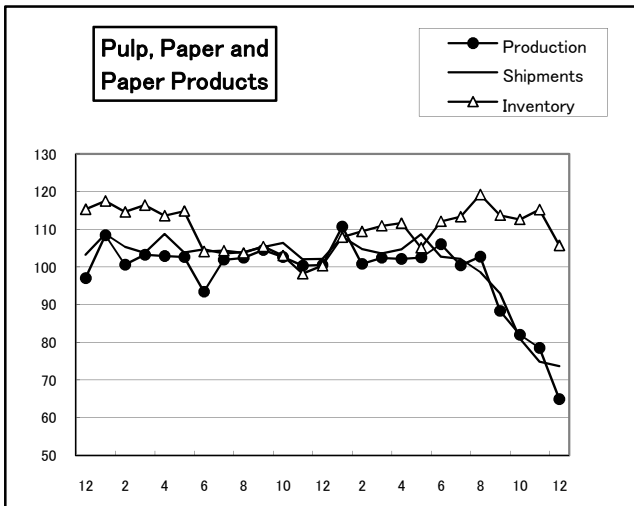
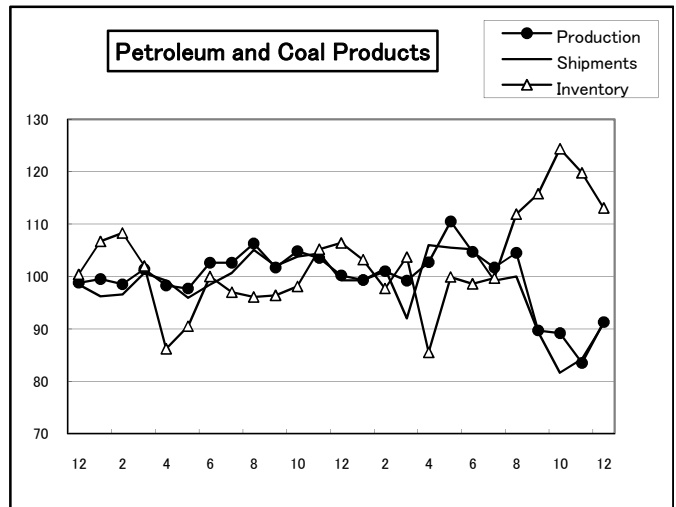
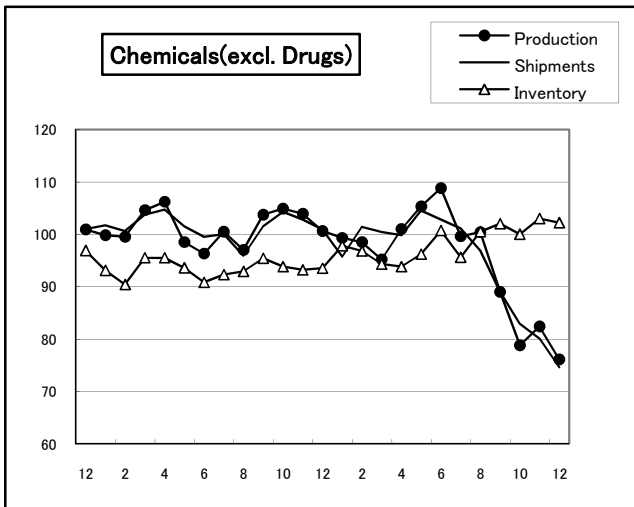
Index Changes in Main Industries (index, 2005 = 100, seasonally-adjusted)



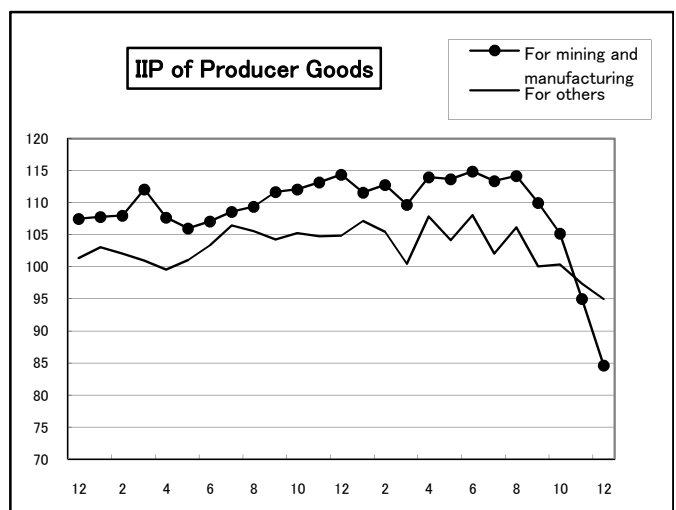
Index Changes in Main Industries (index, 2005 = 100, seasonally-adjusted)



Index Changes in Main Industries (index, 2005 = 100, seasonally-adjusted)



(For Reference)



(For Reference)